


3) Drag select the selector column to select contiguous transactions.

Delete Transactions

- 1) Select the transactions to be deleted
- 2) Click on the **Delete** DXM menu button illustrated opposite. 
- 3) Tick the box to permanently delete the transaction, or leave un-ticked to only mark as deleted - later re-restorable if required. Click **OK**

Network Configuration Sharing

Introduction

A *configuration* is a collection of data such as sequences, aggregates, templates and general user settings. Each installation of HEALTHone™ has its own *configuration set*, which equates therefore on a network to each user having their own set. While this allows for individual preferences many users would like ONE common configuration set for all users.

There are two ways in which HEALTHone™ allows this common network set to be managed:

- When logging into HEALTHone™ the network configuration set is selected.

Note: Once a configuration set has been selected it will remain the active set for future logons until changed.

Each user has their own set and synchronises with the network set when required. Typically all changes are made to the network configuration set and all users synchronise to this when required.

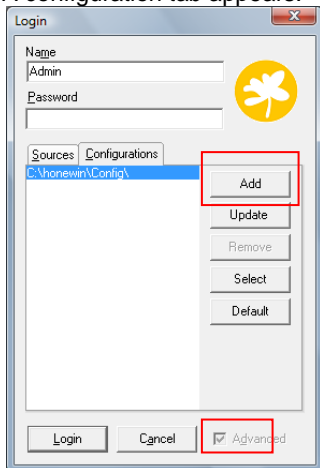
Normally one or other of the above methods is chosen but not both.

Selecting a Configuration Set at Logon

Technique

1) Start HEALTHone™ and when the logon screen opens click on the *Advanced* tick box.

A configuration tab appears.



2) Click on the *Configuration* tab to bring it forward.

- The configuration tab displays the location of the local configuration set.

3) Click on the **Add** button.

4) In the *Browse for Folder* window locate the network configuration set (usually on the server ...**Honewin\Config**). Click **OK**.

- The server configuration location is added to the configuration tab.

5) Select the server configuration and click on **Select**. Click on the *Sources* tab and logon in the usual way.