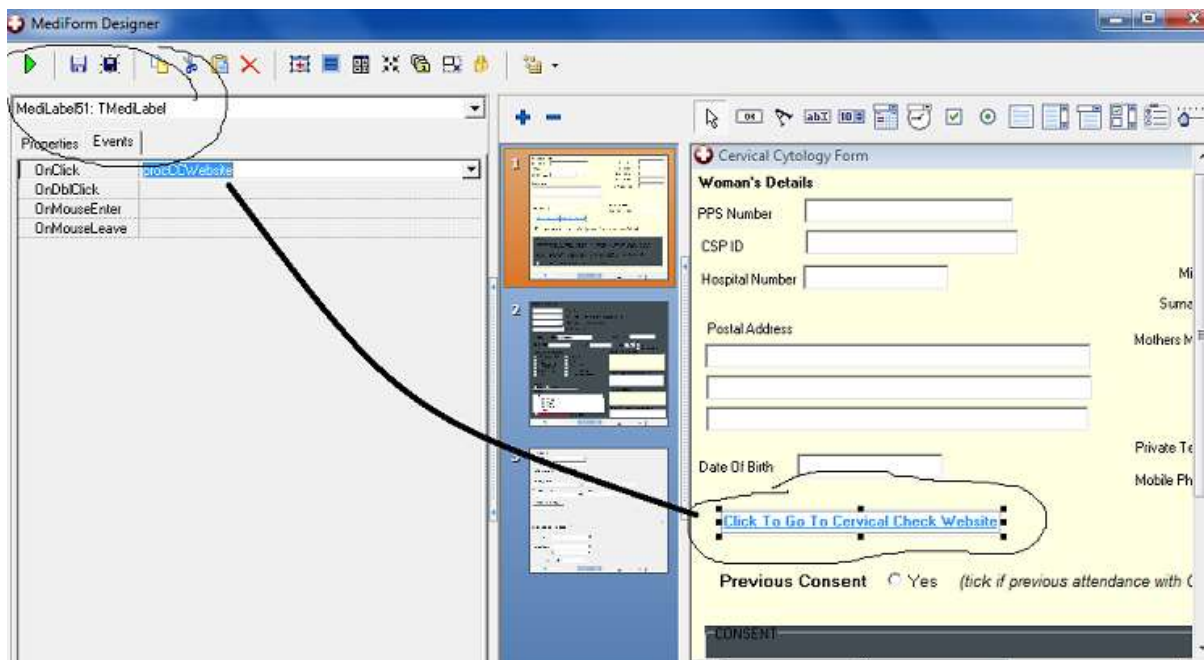


I want to include a link to the cervical check website in my cervical cytology mediform

Select the mediform in a patient chart. Open it for editing. Immediately save this mediform with a different name (e.g. cervical_smear_2013_new). In this new mediform now create a new 'Medilabel' and in the Properties tab view (bottom left tabs) choose the Events tab and select or type 'procCCWebsite'



Open the Script tab (middle bottom tabs) and type the following code below the last text you see and above the '=====' at the bottom of the script:

```
19 procedure procCCWebsite(ComponentName; var State);  
20 begin  
21     MediContext.ShellOpenFile(' www.cervicalcheck.ie ');  
22 end;  
23 //=====
```